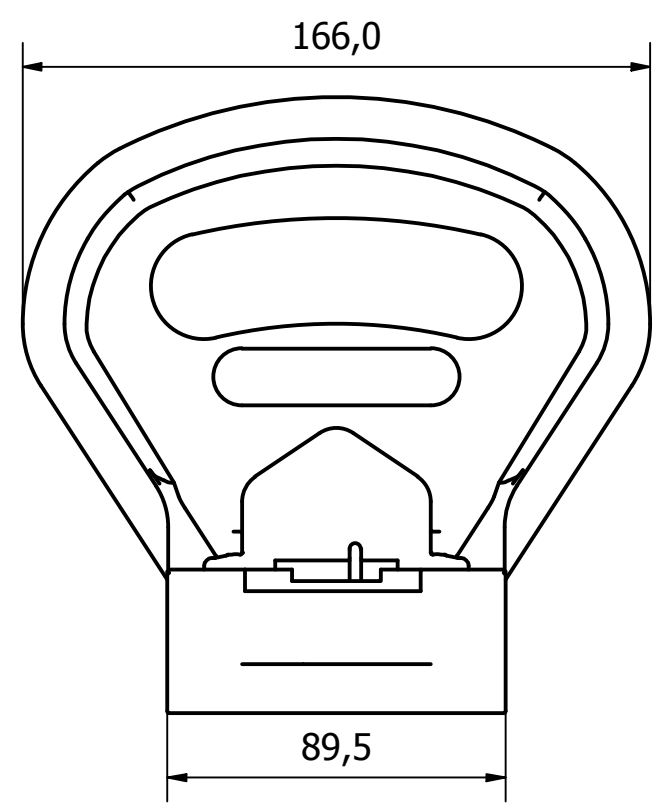
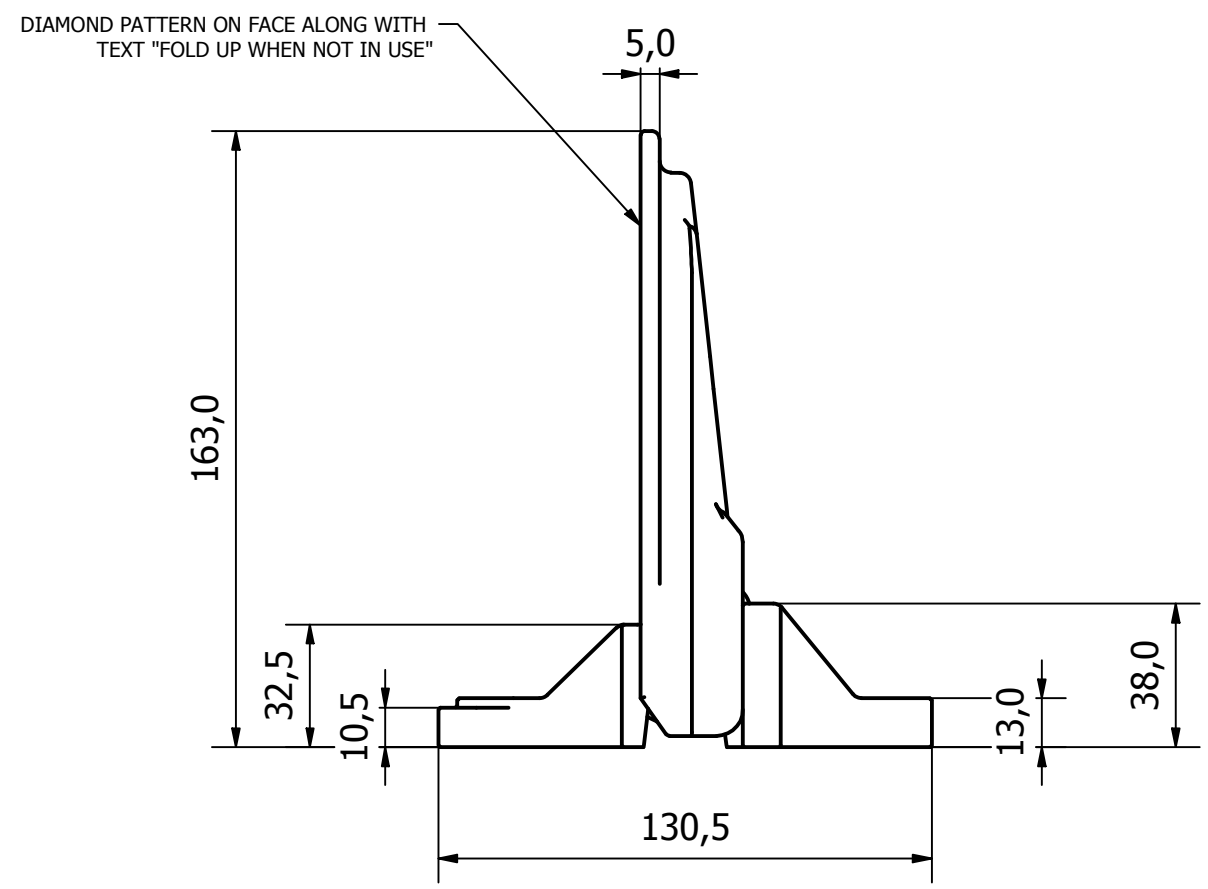
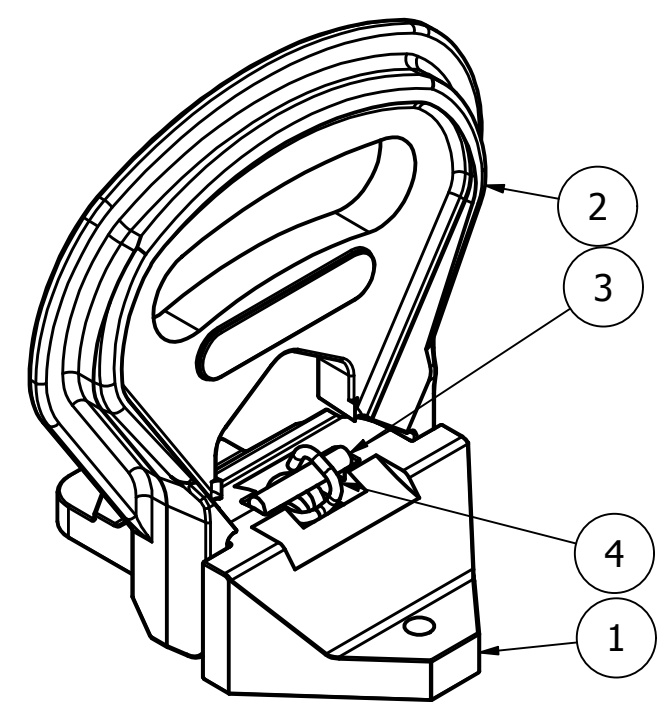
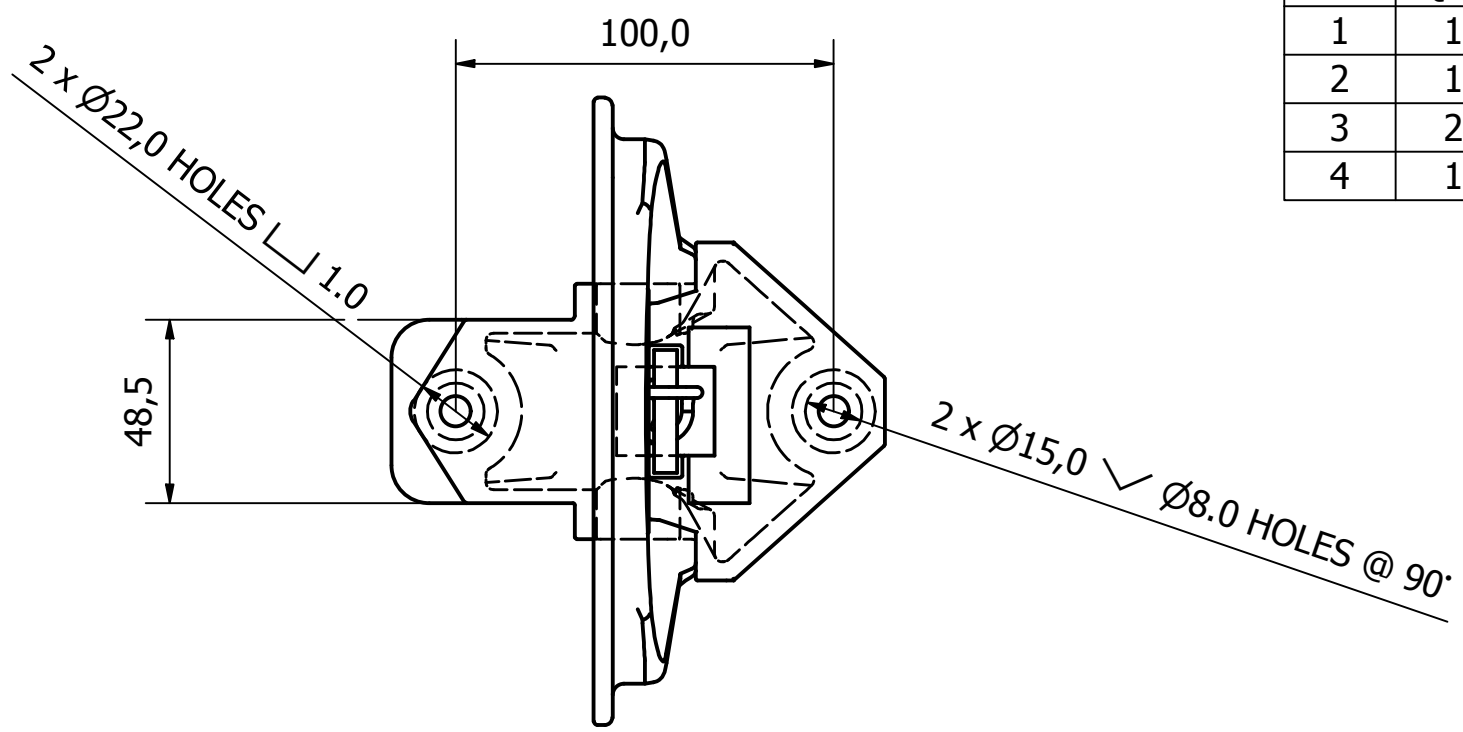


PARTS LIST			
ITEM	QTY	PART NUMBER	DESCRIPTION
1	1	0980-001-1	CAST STEEL H/DUTY STEP BODY - Z/C PASSIVATED
2	1	0980-001-2	CAST STEEL H/DUTY DIAMOND PATTERN STEP - Z/C PASSIVATED
3	2	0980-001-3	S/STEEL SPRING SPRING PIN - NATURAL
4	1	0980-001-4	S/STEEL COIL SPRING - NATURAL



1	VALIDATION COMPLETE	13/12/18	A.P
REV	DESCRIPTION	DATE	APPROVED

GENERAL TOLERANCES ON LENGTHS
0.5 - 6 ± 0.1mm
6 - 30 ± 0.2mm
30 - 120 ± 0.3mm
120 - 400 ± 0.5mm
400 - 1000 ± 0.8mm
1000 - 2000 ± 1.2mm
2000 - 4000 ± 2.0mm

ALBERT JAGGER LTD
 GREEN LANE
 WALSALL PHONE: 01922 471000
 WEST MIDLANDS FAX: 01922 648021
 WS2 8HG

THIS DRAWING & THE DESIGN SHOWN ARE THE PROPERTY OF ALBERT JAGGER LTD AND MUST NOT BE USED OR COPIED BY A THIRD PARTY WITHOUT PERMISSION

DRAWN BY	CHECKED BY	SCALE	MATERIAL	MASS	FINISH	Date	ALL DIMS IN MM UNLESS STATED DO NOT SCALE
U.F	A.P	1 : 2	SEE TABLE	2.203 kg	SEE TABLE	10/12/2018	



H/DUTY FOLDING ACCESS STEP		A3	
0980-001	Edition 1	Sheet 1 / 1	