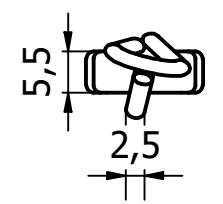
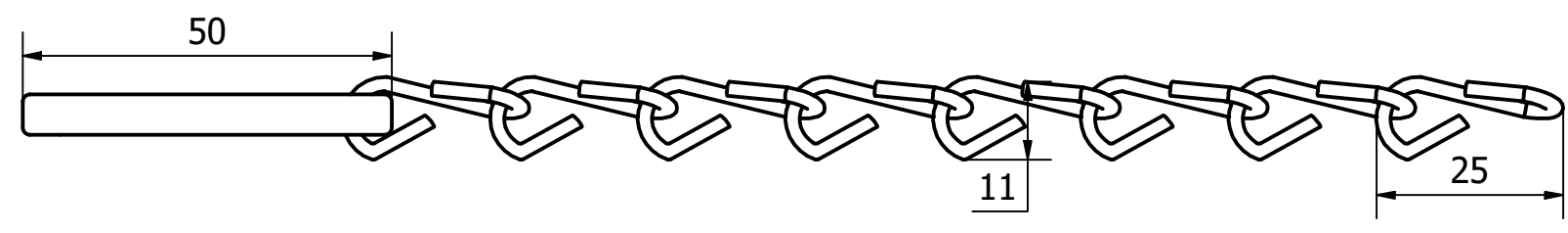
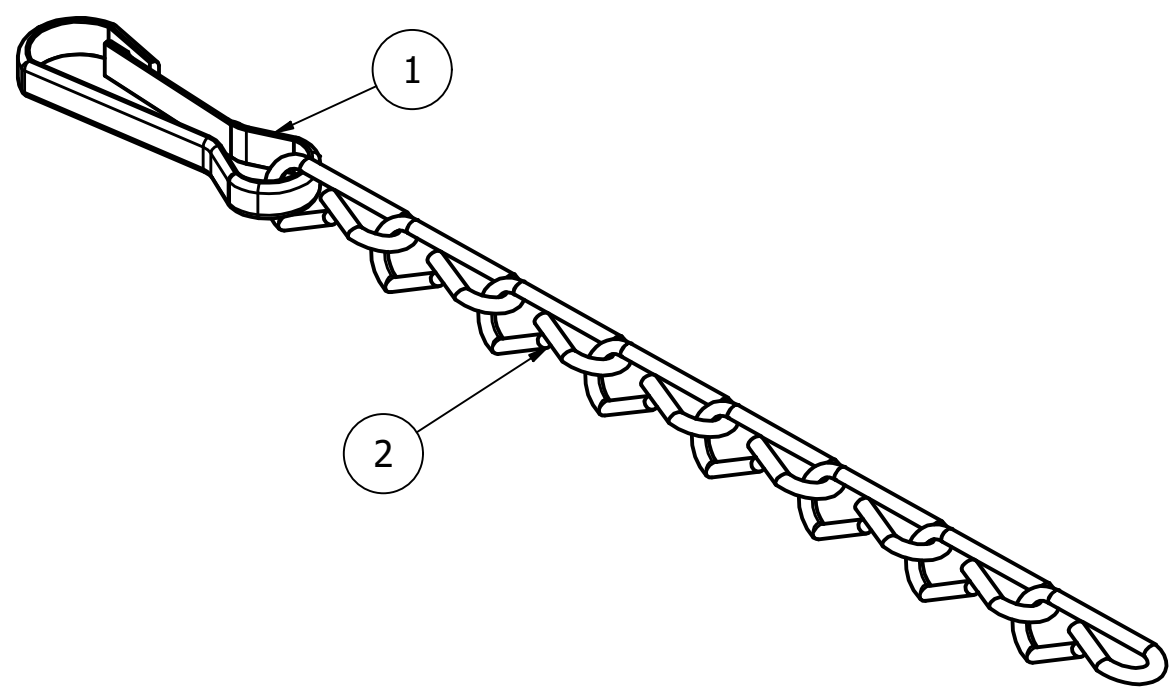
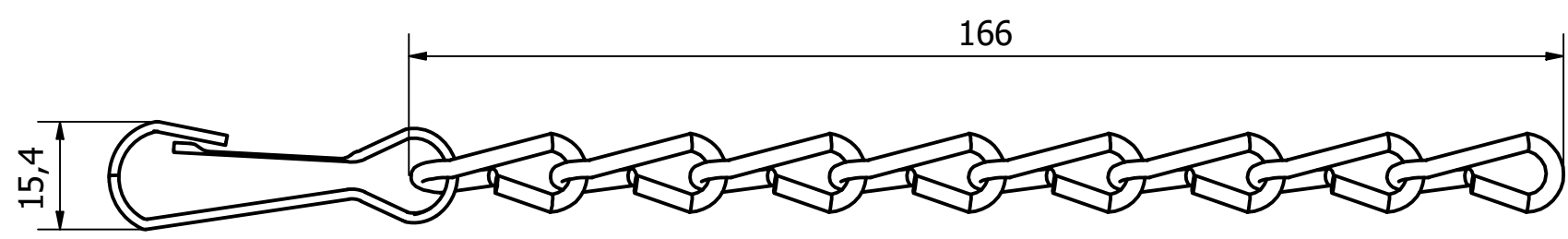


PARTS LIST			
ITEM	QTY	PART NUMBER	DESCRIPTION
1	1	2660-001-2	M/STEEL SRING HOOK BODY- Z/C PASSIVATE
2	8	2660-001-3	M/STEEL CHAIN LINK - Z/C PASSIVATE



NOTE:
CHAIN CONSISTS OF 8 LINKS - 166mm LONG

1	VALIDATION COMPLETE	19/07/2021	C.H
REV	DESCRIPTION	DATE	APPROVED

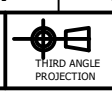
GENERAL TOLERANCES ON LENGTHS
0.5 - 6 ± 0.1mm
6 - 30 ± 0.2mm
30 - 120 ± 0.3mm
120 - 400 ± 0.5mm
400 - 1000 ± 0.8mm
1000 - 2000 ± 1.2mm
2000 - 4000 ± 2.0mm

ALBERT JAGGER LTD
GREEN LANE
WALSALL PHONE: 01922 471000
WEST MIDLANDS FAX: 01922 648021
WS2 8HG

THIS DRAWING & THE DESIGN SHOWN ARE THE PROPERTY OF ALBERT JAGGER LTD AND MUST NOT BE USED OR COPIED BY A THIRD PARTY WITHOUT PERMISSION

DRAWN BY
S.R

CHECKED BY
C.H



SCALE
1 : 1

MATERIAL
SEE TABLE

MASS
0.003 kg

FINISH
SEE TABLE

Date
12/07/2021

ALL DIMS IN MM UNLESS STATED DO NOT SCALE

A3



LIGHT WEIGHT SPRING HOOK & CHAIN

2660-001

Edition
1

Sheet
1 / 1