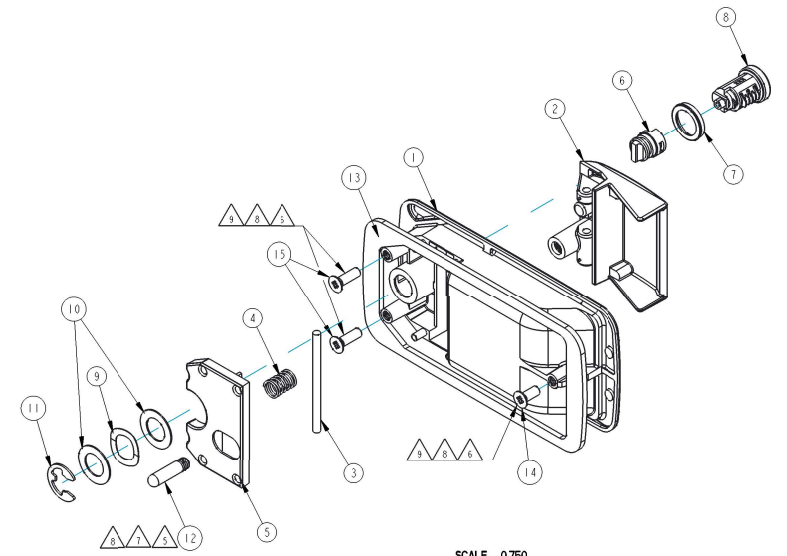
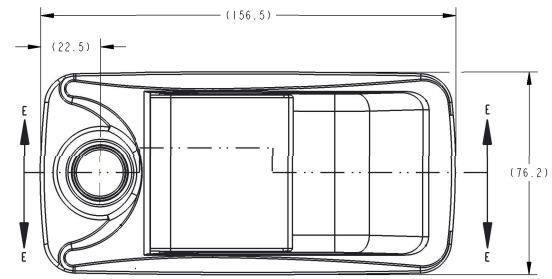
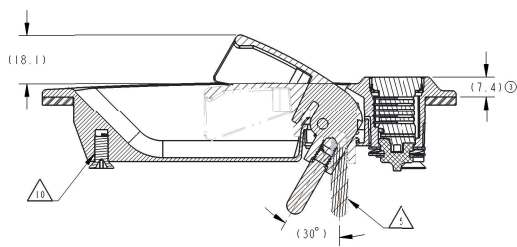


PART NUMBER DESCRIPTION	ITEM 1 EXTERIOR CASE (QTY)	ITEM 2 HANDLE (QTY)	ITEM 3 FIXING ROD (QTY)	ITEM 4 SPRING (QTY)	ITEM 5 COVER PLATE (QTY)	ITEM 6 TANG (QTY)	ITEM 7 SEAL (QTY)	ITEM 8 LOCK CYLINDER (QTY)	ITEM 9 CRIMP WASHER (QTY)	ITEM 10 WASHER (QTY)	ITEM 11 CIRCLIP (QTY)	ITEM 12 OPERATING PEG (QTY)	ITEM 13 SEAL (QTY)	ITEM 14 SCREW (QTY)	ITEM 15 SCREW (QTY)	FINISH	KEYS SUP'LD YES/NO (QTY)	KEY SERIES
70168-01 EXT PDL HDL ASM BLK MERIT NLKG	70159-03 (1)	3242-56 (1)	3243-127 (1)	3214-27 (1)	3246-01 (1)	70157-06 (1)	16025-01 (1)	16014-99-9999 (1)	161-127 (1)	787-19 (2)	9266-02 (1)	312-127-36 (1)	3253-03 (1)	9062-19 (1)	9066-19 (2)	BLACK POWDER COATED	NO (NONE LOCKING)	N/A

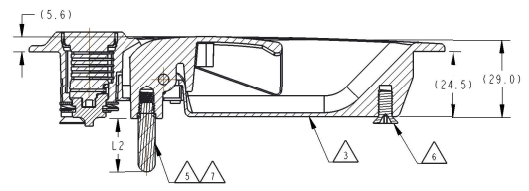
REVISION	ECN	ECN BY	DESCRIPTION
A	1616	19/03/2013	CREATED
1	1616	26/02/14	RELEASED FOR PRODUCTION FROM REV A
2	39494	27/02/14	BOM: ITEM 11 9266-02 WAS 9266-01
3	39298	10/04/2014	BOM PN DESCRIPTION REVISED REF DIM (7.4) ADDED



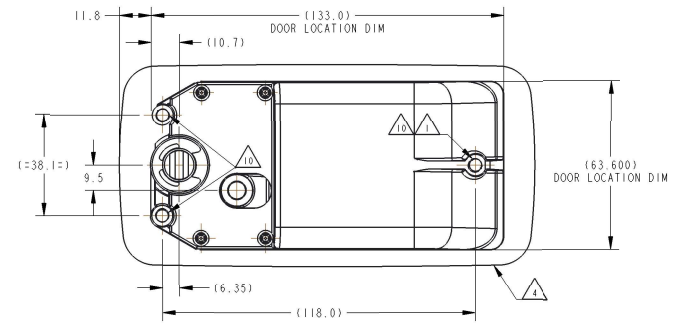
SCALE 0.750
EXPLODED ISO VIEW



SECTION E-E
AT OPEN POSITION



SECTION E-E
AT CLOSE POSITION



- NOTES: UNLESS OTHERWISE SPECIFIED:
- ① 3 X M5 FIXING HOLES
 - ② FINISH IS FOR REFERENCE ONLY
 - ③ VIEW WITH ITEM 13 REMOVED
 - ④ VIEW WITH ITEMS 14 & 15 REMOVED
 - ⑤ RECOMMENDED TIGHTENING TORQUE ON OPERATING PEG : 6 Nm
 - ⑥ RECOMMENDED TIGHTENING TORQUE ON FIXING SCREWS : 6 Nm
 - ⑦ DEPENDING TO THE DOOR THICKNESS, 312-127 (OPERATING PEG) LENGTH VARIES
 - ⑧ ITEM 12, 14 & 15 TO BE FITTED BY CUSTOMER
 - ⑨ SCREWS ON EXPLODED VIEW (ITEMS 14 & 15) MAY NOT REPRESENT THE CORRECT VERSION (SEE BOM FOR THE CORRECT PART NUMBER)
 - ⑩ HOLES TO BE TAPPED M5 AT FIRST STAGE OF ASSEMBLY (SEE 70159 DRW FOR TAPPING DETAILS)

SHEET 1 OF 1 METRIC

Prod Status: PRODUCTION	Control Status: TRIMARK CONTROL Group: TWA		
<small>① INDICATES REQUIRED ASSEMBLY INFORMATION DIM: PRE-DR VERSION DIMS. OF THE UNFINISHED VERSION OF PART DIMS. DIM: ALL DIMENSIONS APPLY BEFORE FINISH (UNLESS OTHERWISE SPECIFIED)</small>		DRAWN BY: MF 19/03/2013	500 Bailey Avenue New Hampton, Iowa 50659 U.S.A. Tel: 641-394-5100 Fax: 641-394-2392
UNLESS OTHERWISE SPECIFIED DIMS: ASME Y14.5M 1994 DIM: MILLIMETER X, Y, Z: ±0.1 X, Y, Z: ±0.1 X, Y, Z: ±0.05 X, Y, Z: ±0.05 X, Y, Z: ±0.10 X, Y, Z: ±0.10 X, Y, Z: ±0.15 X, Y, Z: ±0.15 X, Y, Z: ±0.20 X, Y, Z: ±0.20	CHECKED BY: KS 23/10/2014	PROJECT: 12258 PRODUCT CODE: 01C (030-7100)	This drawing and the information contained herein is the property of TriMark Corporation and shall not be used for any purpose without our written consent.
DO NOT SCALE DRAWING REF: 1/4 OF A 20:1 FOR SUP QUALITY REQ. REF: 1/4 OF A 20:1 FOR INT. QUALITY REQ.	CUSTOMER PART NUMBER	CUSTOMER	DESCRIPTION
PART WEIGHT	SURFACE AREA	SIZE: D	SCALE: 1.0
		PART NUMBER	70168